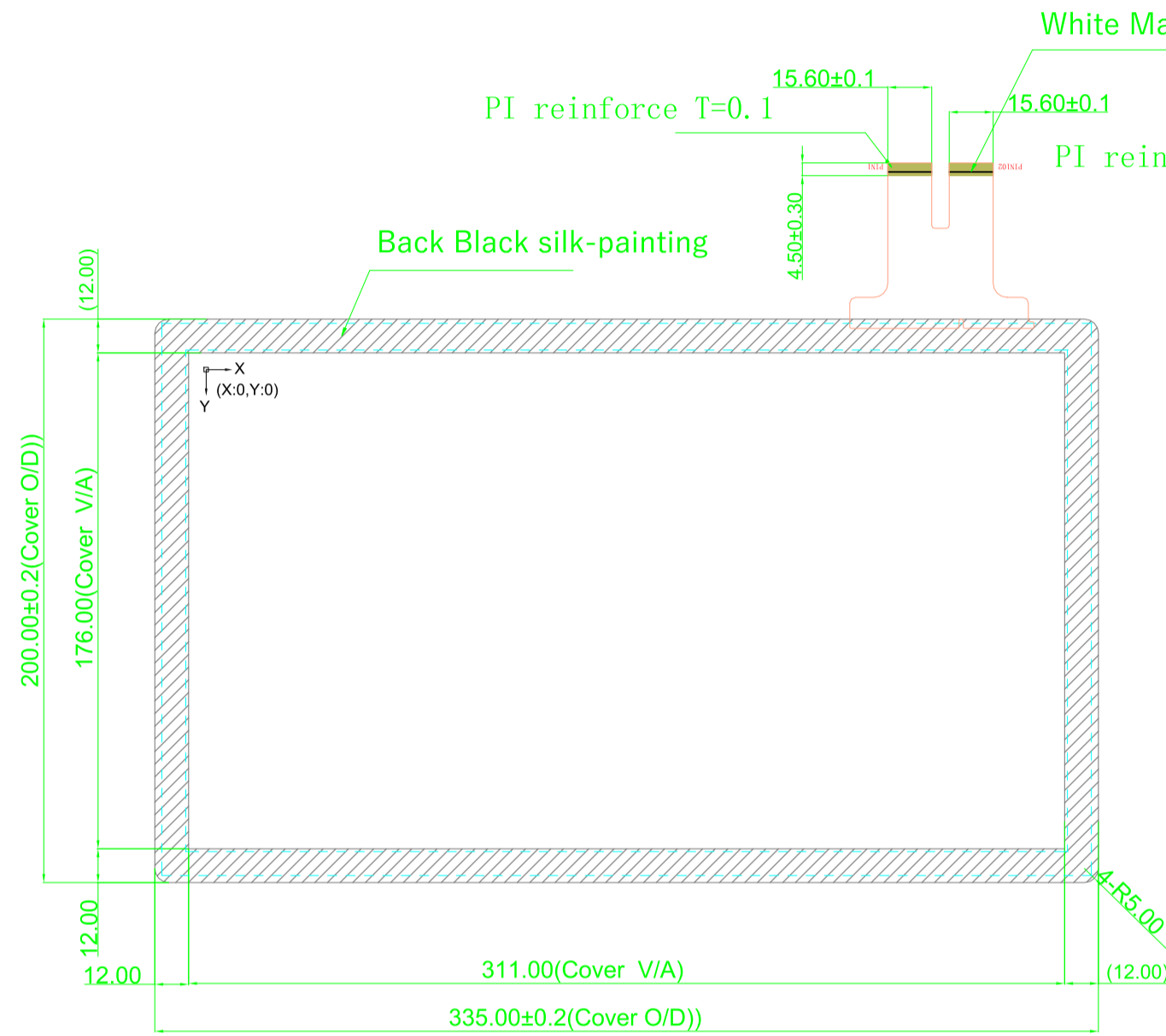
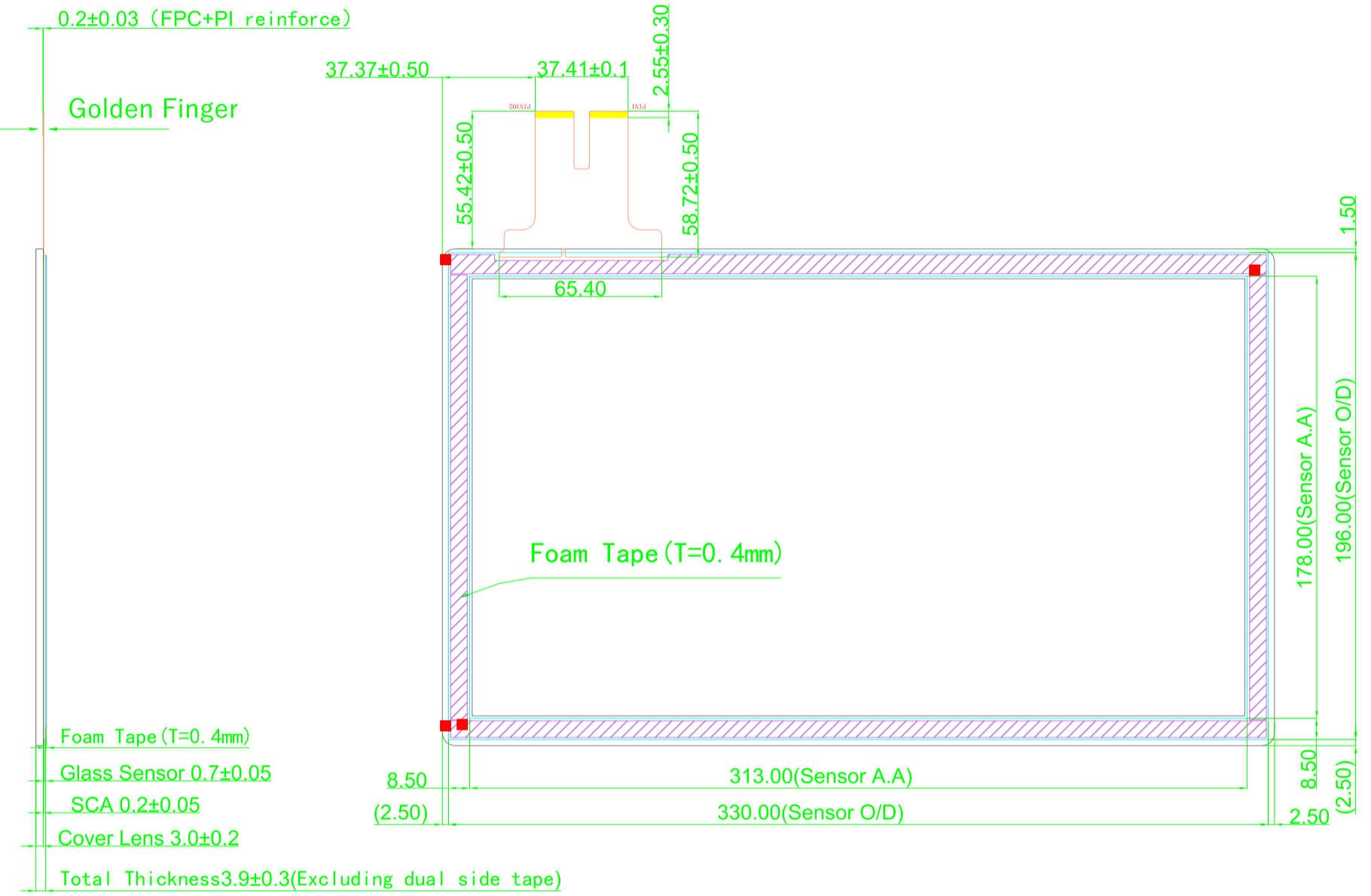


1	2	3	4	5	6
ver.	modify NO.	Details	Area	P. I. C	Date

FRONT VIEW



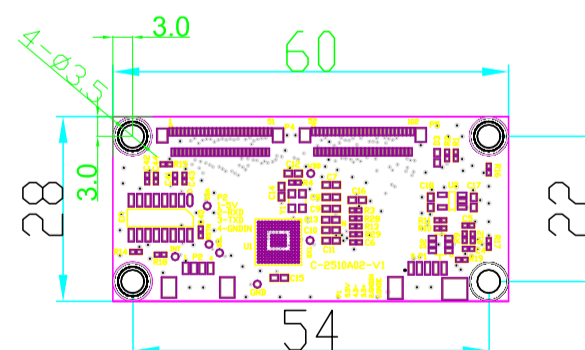
SIDE VIEW



BACK VIEW

Technical Datasheet:

1. Cover Glass: Tempered Glass
2. Structure: Glass+Glass
3. Controller IC: ILI2510
4. Surface Hardness: >6H;
5. Light Transmittance: >86%
6. Unmarked Tolernace: ±0.3mm
9. All materials conform to RoHS standards



SCALE (2: 1)
ILITEK 2510 CONTROLLER

PIN	define
1	GNDE
2	GNDIN
3	D+
4	D-
5	VDD/5V

Designed by:	D032
Checked by:	T006
Approved by:	P012
Workmanship:	W002
Standardization:	S015
Released by:	M012

Part No.	SNT-ITO-TPB-14-ILI		
Product Name :	14inch ITO Touch Panel	Drawing No.	S200815i140
		Project Code.	i140S02
Business Unit:	SNT-BTP	Period Mark	View Angle
		A	Ratio
			1:4
BOM Code	1.13.140.02.2012	Page 1	Total 1 Page
Product Series	BTP-ITO	思诺泰科创电子(苏州)有限公司 SINOTECHNICS INC.	